

acmestudios

INTERNATIONAL RESIDENCIES PROGRAMME

July 2012: Events and programme update



25 YEARS OF INTERNATIONAL ARTISTS' RESIDENCIES IN LONDON

Acme Studios celebrated 25 years of hosting international artists' residencies in London with the launch of a publication on 28 June at London's City Hall. The publication highlights current programme partners and features a selection of some of the 360 artists who have benefitted from major work/live residencies in the capital.

The launch was an opportunity for Acme to celebrate the achievements of the programme which currently supports 24 artists annually with each spending between three and 12 months working and living in East London.

Ambassadors, cultural leaders, curators and artists were present for the launch of the publication which is available to download from the Acme website -

www.acme.org.uk/international

At the launch, Acme welcomed Canada Council for the Arts who will begin a London residency with Acme in September 2012.

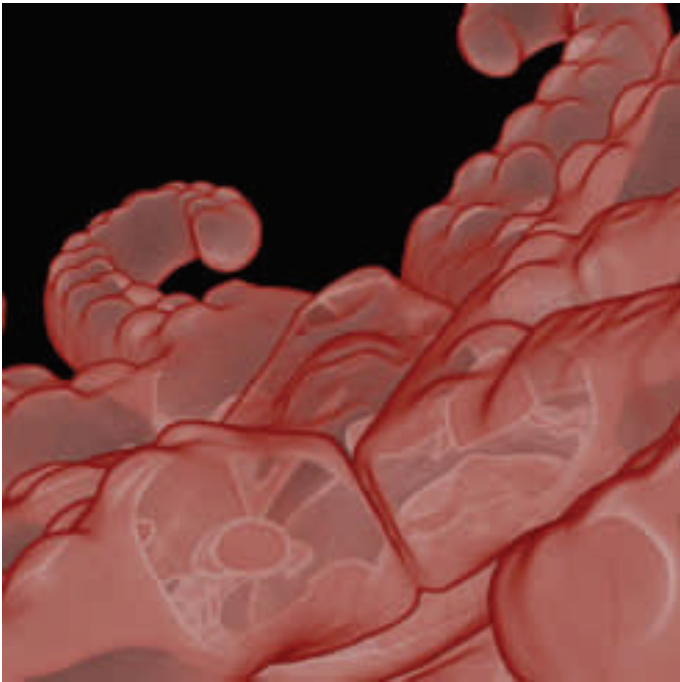
(L-R) Gabriel Araujo, Public Programmes Officer, High Commission of Canada; François Dion, Visual Arts Officer, Canada Council for the Arts and David Panton, Acme Director at Acme's International Residencies Programme celebrations. Photo: Moz Bulbeck (2012)

HÉLÈNE LORD, *INFINITE CITY*

On June 7, artist Hélène Lord (Québec Residency) presented *Infinite City*, an exhibition of recent drawings inspired by her journeys on foot around London. The exhibition was held at Vyner Street Gallery, supported by the Québec Government Office, London.

JOHN MATEER, *THERE IS NO GLOBAL*

As part of our Associate Artist Residency programme, IRP welcomed inaugural Australia Council for the Arts writer recipient John Mateer for a three-month residency. As part of his residency a panel discussion *There Is No Global* was held at Goodenough College on May 30, 2012. The event featured Australian artists, DeeJ Fabyc, Paul Knight and Christian Thompson, discussing themes of globalism, mobility and national identity as a factor in artists' international careers.



Erica Seccombe, *Nanoplastica*, June 2012.

ERICA SECCOMBE, *NANOPLASTICA*

Current Australia Council residency artist, Erica Seccombe, exhibited *NANOPLASTICA* – an exhibition of projected 3D digital scans from June 21 - 23 at *So Far The Future* gallery in central London. Erica's project observes the visualisation of objects through scanning the volumetric data of a series of miniature plastic toys using advanced X-ray technology. A current PhD candidate at the Australian National University School of Art, Erica has been working with scientists in the University's 3D Microcomputed Tomography X-ray Facility since 2006.

VISHWA SHROFF - ASSOCIATE ARTIST RESIDENCY

During March, Associate Residency Artist Vishwa Shroff, presented a drawing-based installation *One Eye! Two Eyes! Three Eyes!* at the Acme Project Space to conclude her three-month residency. As a result of her successful residency, Vishwa is currently undertaking another residency at Clarke Griffiths Levine, Birmingham.

HELEN JOHNSON, *DEAD METAPHOR*

Also at the Acme Project Space, Helen Johnson (Australia Council residency)

presented new paintings during January in *Dead Metaphor*. Helen's delicate application of painted imagery onto silk panels connected the visual and the material looking at the re-use of images over time.

CATALIN DORIAN FLORESCU

The winner of the Swiss Book Prize 2011 Catalin Dorian Florescu, read from his recent book, *Jacob Decides to Love*, in June at the Goethe Institut. The current Landis & Gyr Residency artist's event was made possible by the Goethe Institut, the Romanian Cultural Institute in London and the Swiss Cultural Fund in Britain.

CONTACT INFORMATION

If you are interested in exploring how a London residency might form part of your cultural and strategic objectives, please contact:

Lea O'Loughlin

Manager

Acme Studios International Residencies Programme

44 Copperfield Road

London E3 4RR

United Kingdom

T +44 (0)20 8981 6811

E lea@acme.org.uk

W www.acme.org.uk/irp

Please contact us on +44 (0)20 8981 6811 if you require this information in an alternative format

© Acme Studios, July 2012



LOTTERY FUNDED



Supported using public funding by

**ARTS COUNCIL
ENGLAND**

Member of

res artis

WORLDWIDE NETWORK
OF ARTIST RESIDENCIES