

## Artists selected for Fire Station Work/Live Residencies

One of the most supportive schemes for professional artists in the UK has awarded major work/live residencies to 12 artists. The following will be moving into Acme's Fire Station building in April 2010:

**Briony Anderson, Gemma Anderson, Kate Atkin, Jonathan Baldock, George Charman, Melanie Clifford, Susan Corke, Robin Footitt, Haroon Mirza, Matthew Noel-Tod, David Osbaldeston and Emma Smith.**

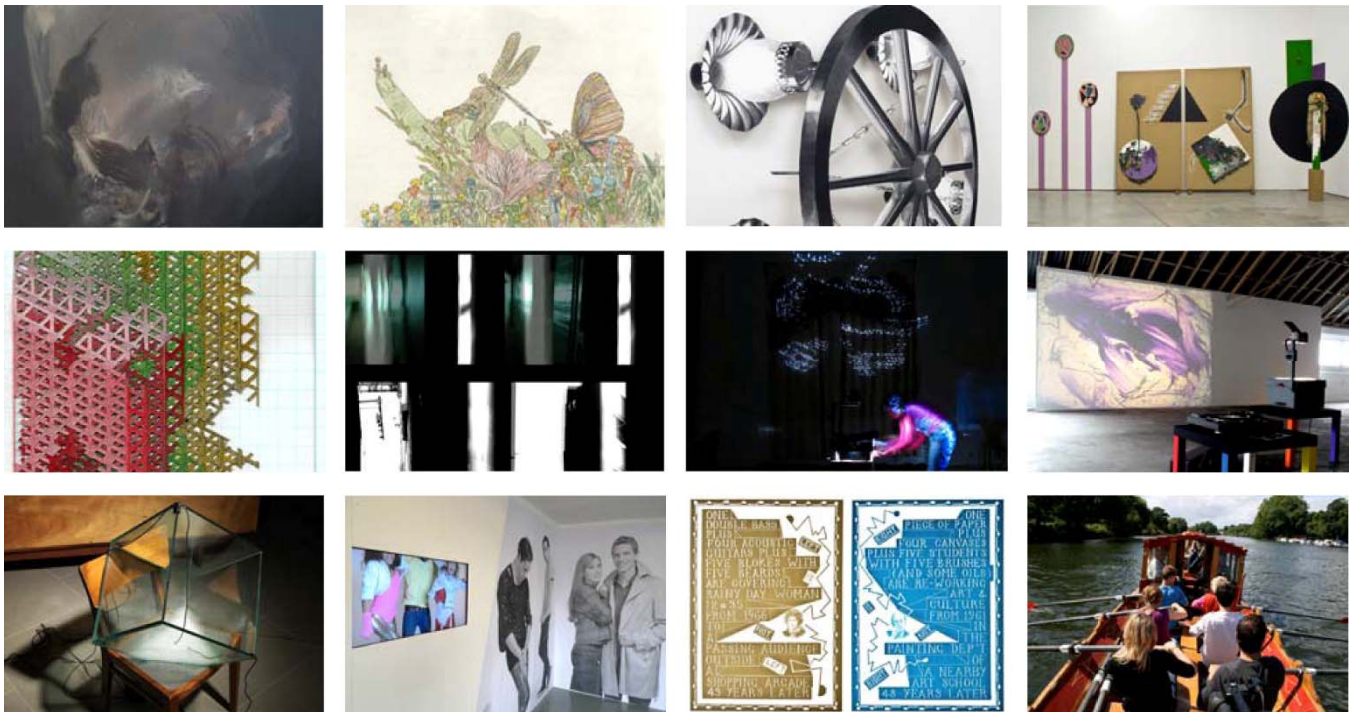


Image: Selection of artists' work from top left to bottom right – Briony Anderson, Gemma Anderson, Kate Atkin, Jonathan Baldock, George Charman, Melanie Clifford, Susan Corke, Robin Footitt, Haroon Mirza, Matthew Noel-Tod, David Osbaldeston, Emma Smith.

The Fire Station Work/Live Residency Programme Four (2010-2015) provides low-cost combined working and living units for 12 selected artists for five years and includes a two-and-a-half-year bursary (a rent-free work/live unit plus a grant of £5,000/year) specifically for a disabled or deaf artist. Over 100 artists applied for the programme and 21 were shortlisted and interviewed by artist and educator Cath Hawes, artist Gayle Chong Kwan, and Acme's Chief Executive Jonathan Harvey.

The work/live programme provides breathing space, allowing artists to concentrate on the development of their work by greatly reducing or removing other practical and economic pressures. Since the programme began in 1997, over forty artists have benefitted from work/live residencies at the Fire Station.

Jarman Award 2009 winner Lindsay Seers took part in the first Fire Station Programme (1997-2001). Acme's Julia Lancaster recently spoke to Lindsay about her time on the residency and her career to date. The interview is available on the Acme website along with profiles of the current artists and more information about the Fire Station Programme:  
[www.acme.org.uk/firestationworklive.php](http://www.acme.org.uk/firestationworklive.php)

ENDS

#### Notes for editors

Acme Studios is a London-based charity that provides artists with affordable studios and living space, residencies and awards. Our expanding Residency, Awards & Community Programme will support over 30 artists this year through the provision of rent-free studios, bursaries, mentoring and professional support. Many of the artists on residency programmes provide public benefit through their engagement with local communities. Previous recipients of Fire Station Work/Live Residencies are:

Programme 1 (1997 - 2001): Edward Allington, Helena Ben-Zenou, Gillian Blease, Paul Burwell, Martin Creed, Perminder Kaur, Kypros Kyprianou, Marty St. James, Noel Paine, Lindsay Seers, Virgil Tracy, Barbara Tyrrell and Joanna Woodward.

Programme 2 (2001 - 2005): John Askew, Sonia Baka, Stephen Conning, Stevie Deas, Paul Harrison, Laurence Harvey, Kevin Heavey, Elizabeth LeMoine, Gordon McKenna, Pat Naldi, Hayley Newman, Stuart Parkinson, Tim Sanderson, Jack Southern, Erika Tan and Aaron Williamson.

Programme 3 (2005 - 2010): Briony Anderson, Kate Broad, Ben Cove, Lisa Cheung, Maggie Hills, Robert Holyhead, Lizzie Hughes, Riccardo Iacono, Samson Kambalu, Damien Roach, Jack Southern and Ming Wong.

**For further information about Acme Studios, see [www.acme.org.uk](http://www.acme.org.uk) or call 020 8981 6811.**  
For further press information, please contact Jack Fortescue, Communications Officer at:  
Acme Studios, 44 Copperfield Road, London E3 4RR  
T 020 8981 6811 F 020 8983 0567 E [jack@acme.org.uk](mailto:jack@acme.org.uk)